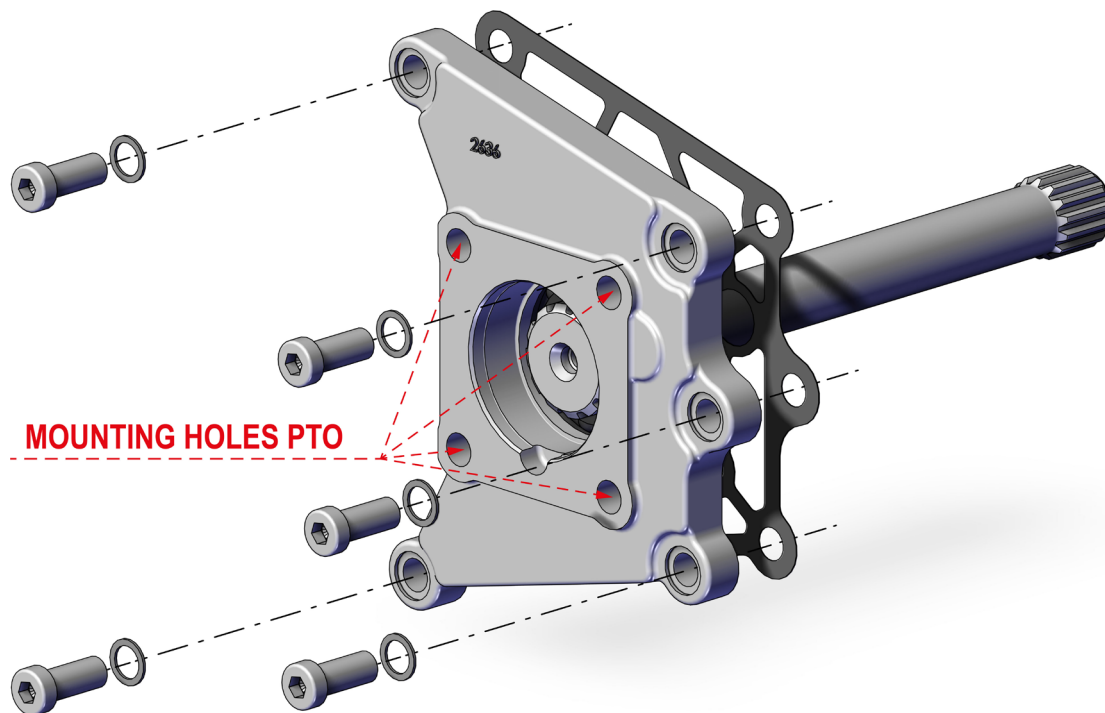




**NEW SHAFT ADAPTER FOR GEARBOX
ZF AS-TRONIC
with INTARDER 2 and INTARDER 3**



PZB is informing you that it has been defined and introduced a new adapter shaft, to fit PTOs onto the **ZF AS-TRONIC INTARDER 2 & 3**.

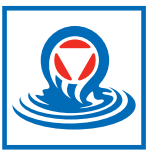
Please refer to our documentation and our sales offices for ordering codes and parts availability.

The use of this new adapter, on this family of transmissions, is strictly required due to weaknesses of the Gearbox housing itself (*please refer to ZF UFB L10/20 - Breakage at PTO Installation Interface*).

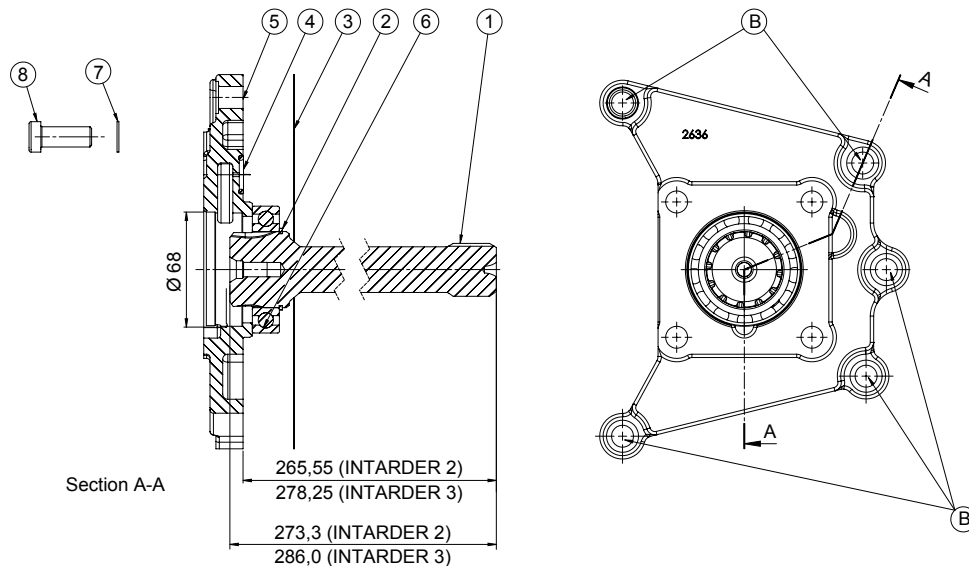
The adapter, due to its configuration, shares the load on the back-end of the gearbox case on a much wider surface that reduces the stress concentration at the PTO mounting position preventing any failure of the housing itself.

The new Adapter kit includes **5 off** supplementary bolts (M12x35 - 8.8); **5 off** washers; **1 off** adapter plate, **1 off** Gasket; **1 off** Bearing; **1 off** quill-shaft and **1 off** circlip.

ADAPTER SHAFT CODE	GEARBOX	MOUNTING INSTRUCTIONS
205A683R000	ZF AS-TRONIC with INTARDER 2	See page 2
205A743R000	ZF AS-TRONIC with INTARDER 3	



**MOUNTING INSTRUCTIONS
ADAPTER KIT FOR GEARBOXES
ZF AS-TRONIC with INTARDER 2 and INTARDER 3**



REF.	CODE	DESCRIPTION	QT.
1	11305536000	Shaft (for gearboxes with INTARDER 2)	1
	11305594000	Shaft (for gearboxes with INTARDER 3)	
2	00701004000	Circlip Seeger 45e UNI 7435	1
3	12901574000	Gasket sp. 0,3 mm	1
4	00802154000	O-Ring	1
5	10701571000	Adapter	1
6	01001016000	Bearing 6009/C3	1
7	00404002000	Washer Schnorr 12 UNI 3703	5
8	00106016000	Screw M12X35	5

- Set assembling operations in order to ensure that all the components are handled with the maximum cleanliness as possible.
- Dismount the four bolts, the rear PTO opening cover and the plug located on top of the PTO opening in order to feed the PTO with forced lubrication from the gearbox. Ensure that the adapter fit properly onto the gearbox plane and in case needed remove the residual paint from the surface of the transmission.
- Fit the pre-assembled shaft ref. 1 (including components ref. 2 and ref. 6) into the gearbox. Please pay attention to properly align the shaft spline with the gearbox spline, the shaft must be installed carefully without hammering on the shaft and has to be fitted by means of the hands only. In case the shaft is not already pre-assembled, assemble first the circlip ref. 2 onto the shaft and secondly the bearing ref. 6 using the proper tool in order to prevent any bearing damage.
- Fit the O-Ring ref. 4 on the adapter, the gasket ref. 3 and then the adapter on PTO mounting surface of gearbox.
- Fit the five screws M12x35 ref. 8 (included in to this kit) together with washer ref. 7 in position ref. B and tighten with a torque of 67 ± 7 Nm.