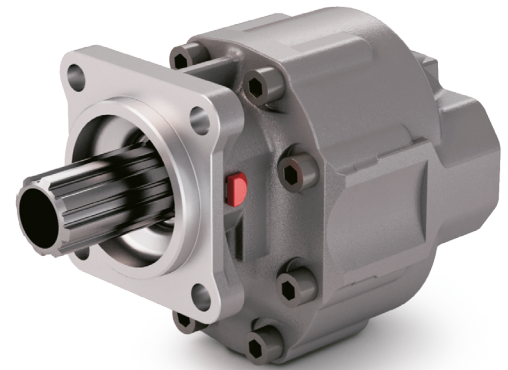
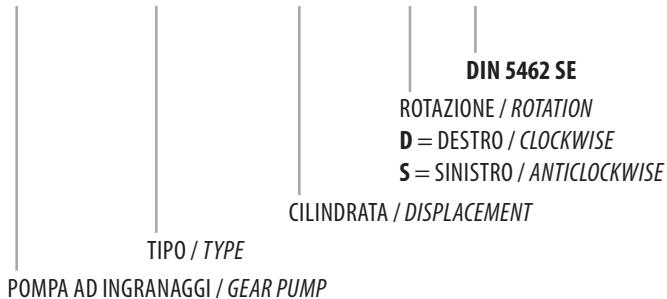


DIN 5462 SE

CODICE DI ORDINAZIONE / ORDERING CODE

200 FSL XXX X S



SCANIA

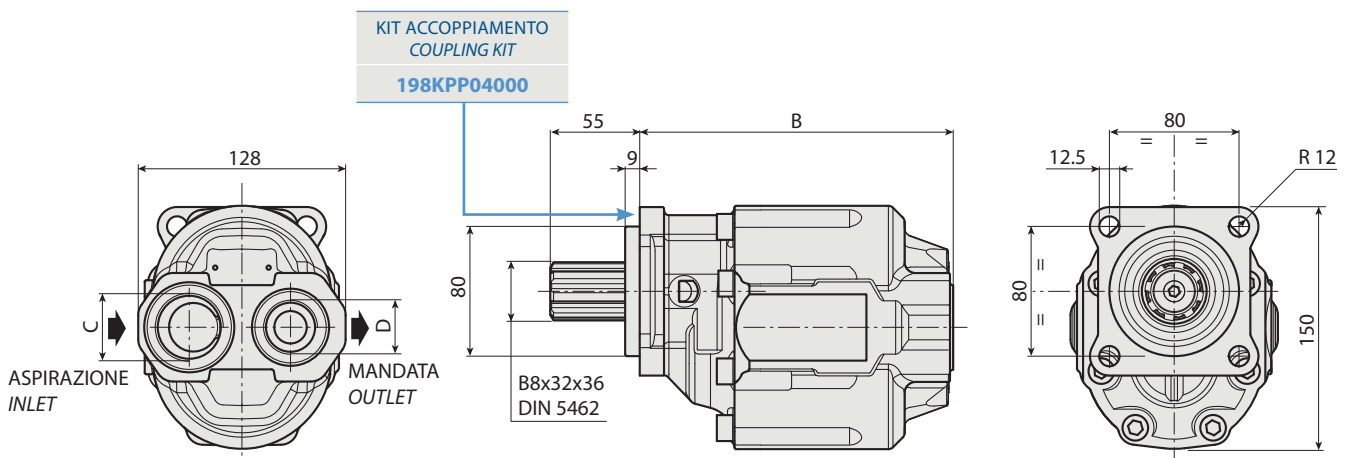
ALBERO USCITA NON SUPPORTATO
OUTPUT SHAFT NOT SUPPORTED



FSL 57

FSL 65

FSL 90



CARATTERISTICHE E DATI TECNICI / SPECIFICATIONS AND TECHNICAL DATA

TIPO TYPE	CODICE / CODE		CILINDRATA DISPLACEMENT cm ³ /rev.	B mm	C ASPIRAZIONE INLET	D MANDATA OUTLET	PESO WEIGHT kg
	ROTAZIONE DESTRA CLOCKWISE ROT.	ROTAZIONE SINISTRA ANTICLOCKWISE ROT.					
FSL 57	200FSL057DS	200FSL057SS	57	173.5	1" G	3/4" G	12.2
FSL 65	200FSL065DS	200FSL065SS	65	178.5	1" G	3/4" G	12.6
FSL 90	200FSL090DS	200FSL090SS	90	193.5	1" 1/4 G	1" G	13.9

KIT RASAMENTI / THRUST PLATES KIT CODICE / CODE 20601800000

KIT GUARNIZIONI COMPLETO / COMPLETE SEALS KIT CODICE / CODE 21901000000

Per la scelta dei raccordi orientabili vedi pag. 212-213 / For the selection of adjustable fittings see page 212-213

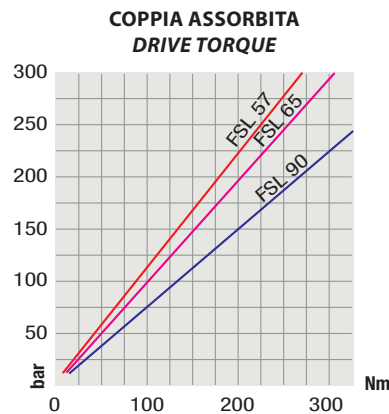
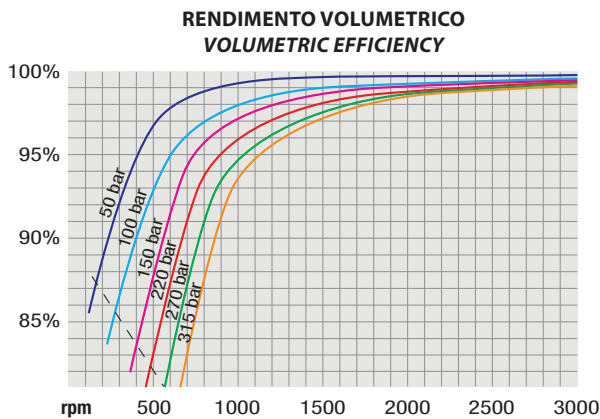
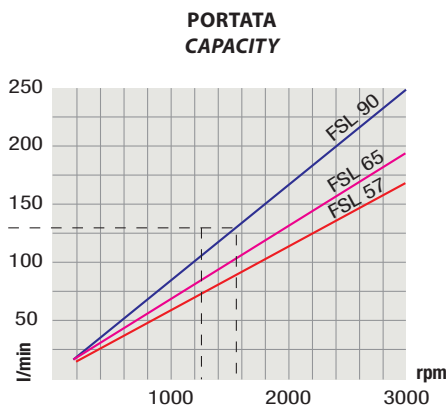
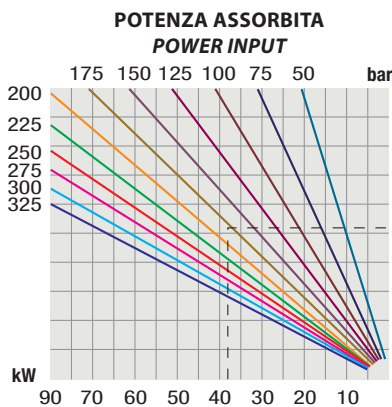
- A richiesta possono essere fornite le pompe ad ingranaggi con le guarnizioni HNBR per climi freddi (-40 °C).
- On request our gear pumps may be supplied with HNBR seals for cold climates (-40 °C).

DIN 5462 SE

TIPO / TYPE			FSL 57	FSL 65	FSL 90
Cilindrata <i>Displacement</i>	Vg	cm ³ /n cm ³ /rev.	57	65	84
Pressione massima continua <i>Max continuous operating pressure</i>	P1		240	220	210
Pressione massima intermittente <i>Max intermittent operating pressure</i>	(max 30 s)	P2	265	240	230
Pressione massima di picco <i>Max peak pressure</i>	(≤ 0.1 s)	P3	285	250	250
Velocità massima intermittente <i>Max intermittent speed</i>	(P ≤ 20 bar)	n3	3500	3500	3500
Velocità massima continua <i>Max continuous speed</i>	(≤ P1)	n1	2000	1800	1500
Velocità minima intermittente <i>Min intermittent speed</i>	(≤ P2 x 0.5) (max 30 s)	n4	300	300	300

1

DIAGRAMMI / DIAGRAMS



RILIEVI ESEGUITI CON OLIO ISO VG 46 A 50° C ($\nu = 30$ cSt)
THE ABOVE SPECIFICATIONS REFER TO OIL TYPE ISO VG 46 AT 50° C ($\nu = 30$ cSt)