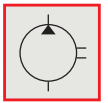
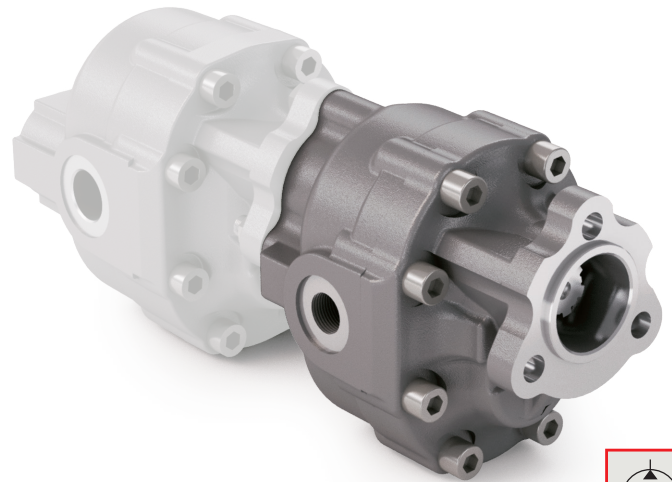
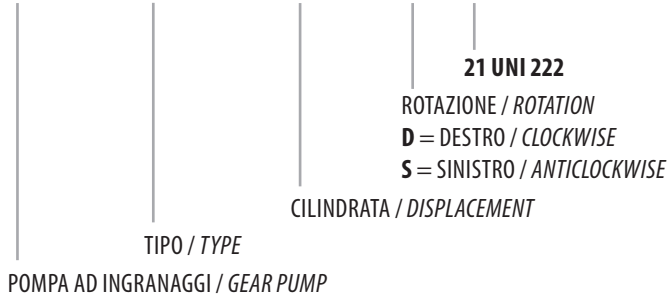


TANDEM 21 UNI 222

CODICE DI ORDINAZIONE / ORDERING CODE

200 FZO XXX X T

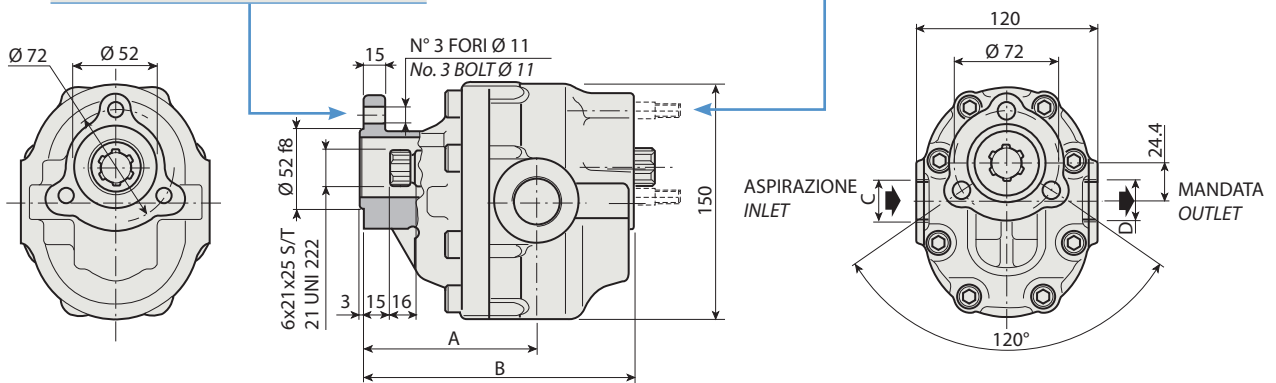


1

KIT ACCOPPIAMENTO POMPA UNI/PTO UNI
COUPLING KIT UNI PUMP/UNI PTO
198KPP02000

| | | | |
|-----------------|-----------------|-----------------|------------------|
| FZO 22 T | FZO 36 T | FZO 57 T | FZO 90 T |
| FZO 27 T | FZO 43 T | FZO 65 T | FZO 110 T |

| | | |
|---|------------|--------------------|
| KIT ACCOPPIAMENTO POSTERIORE: per pompa ad ingranaggi tipo REAR MOUNTING KIT: for gear pump type | FZO | 198KPP02000 |
| | BPS | 198KPP03000 |



CARATTERISTICHE E DATI TECNICI / SPECIFICATIONS AND TECHNICAL DATA

| TIPO TYPE | CODICE / CODE | | CILINDRATA DISPLACEMENT cm ³ /rev. | A mm | B mm | C ASPIRAZIONE INLET | D MANDATA OUTLET | PESO WEIGHT kg |
|------------------|------------------------------------|--|---|---------|---------|---------------------------|------------------------|----------------------|
| | ROTAZIONE DESTRA CLOCKWISE ROT. | ROTAZIONE SINISTRA ANTICLOCKWISE ROT. | | | | | | |
| FZO 22 T | 200FZ0022DT | 200FZ0022ST | 22 | 99.5 | 149.5 | 3/4" G | 1/2" G | 9.1 |
| FZO 27 T | 200FZ0027DT | 200FZ0027ST | 27 | 105 | 153 | 3/4" G | 1/2" G | 9.2 |
| FZO 36 T | 200FZ0036DT | 200FZ0036ST | 36 | 99.5 | 160 | 3/4" G | 1/2" G | 9.3 |
| FZO 43 T | 200FZ0043DT | 200FZ0043ST | 43 | 104.5 | 165 | 1" G | 3/4" G | 10.5 |
| FZO 57 T | 200FZ0057DT | 200FZ0057ST | 57 | 111.5 | 175 | 1" G | 3/4" G | 11.3 |
| FZO 65 T | 200FZ0065DT | 200FZ0065ST | 65 | 116.5 | 180 | 1" G | 3/4" G | 11.8 |
| FZO 90 T | 200FZ0090DT | 200FZ0090ST | 84 | 126 | 195 | 1" 1/4 G | 1" G | 12.8 |
| FZO 110 T | 200FZ0110DT | 200FZ0110ST | 105 | 138 | 207 | 1" 1/4 G | 1" G | 15.3 |

KIT RASAMENTI / THRUST PLATES KIT CODICE / CODE 20601800000

KIT GUARNIZIONI COMPLETO / COMPLETE SEALS KIT CODICE / CODE 21902300000

Per la scelta dei raccordi orientabili vedi pag. 212-213 / For the selection of adjustable fittings see page 212-213

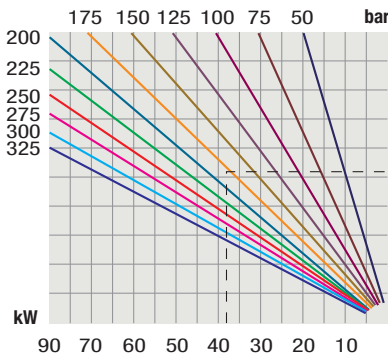
- A richiesta possono essere fornite le pompe ad ingranaggi con le guarnizioni HNBR per climi freddi (-40 °C).
- On request our gear pumps may be supplied with HNBR seals for cold climates (-40 °C).

TANDEM 21 UNI 222

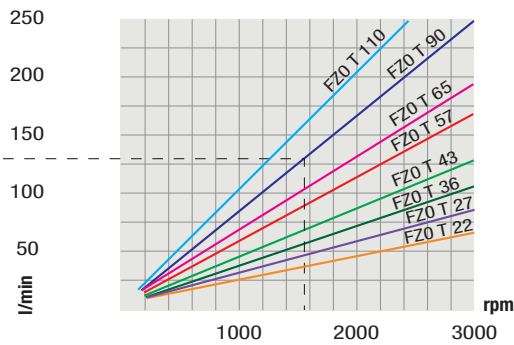
| TIPO / TYPE | | FZO 22 T | FZO 27 T | FZO 36 T | FZO 43 T | FZO 57 T | FZO 65 T | FZO 90 T | FZO 110 T |
|---|---|----------|----------|----------|----------|----------|----------|----------|-----------|
| Cilindrata Displacement | Vg cm ³ /n cm ³ /rev. | 22 | 27 | 36 | 43 | 57 | 65 | 84 | 105 |
| Pressione massima continua Max continuous operating pressure | P1 | 305 | 300 | 300 | 280 | 240 | 220 | 210 | 180 |
| Pressione massima intermittente Max intermittent operating pressure (max 30 s) | P2 | 330 | 325 | 325 | 305 | 265 | 240 | 230 | 200 |
| Pressione massima di picco Max peak pressure (≤ 0.1 s) | P3 | 450 | 450 | 450 | 400 | 380 | 350 | 300 | 250 |
| Velocità massima intermittente Max intermittent speed (P ≤ 20 bar) | n3 | 4000 | 3500 | 3500 | 3500 | 3500 | 3500 | 3500 | 3000 |
| Velocità massima continua Max continuous speed (≤ P1) | n1 | 2500 | 2200 | 2200 | 2200 | 2000 | 1800 | 1500 | 1500 |
| Velocità minima intermittente Min intermittent speed (≤ P2 x 0.5) (max 30 s) | n4 | 450 | 350 | 350 | 350 | 300 | 300 | 300 | 300 |

DIAGRAMMI / DIAGRAMS

POTENZA ASSORBITA
POWER INPUT

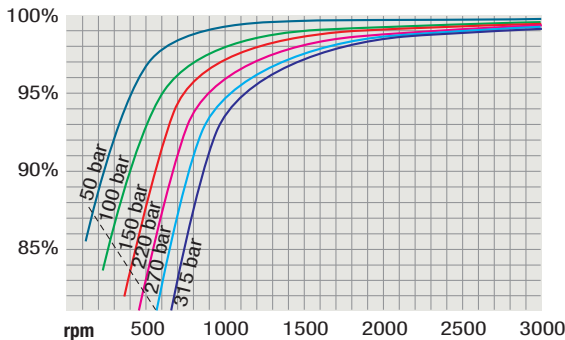


PORTATA
CAPACITY

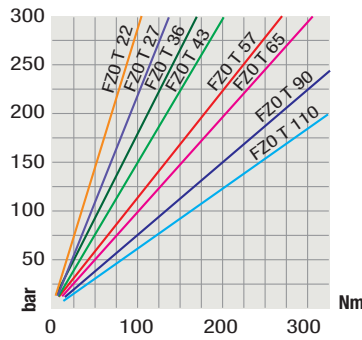


RILIEVI ESEGUITI CON OLIO ISO VG 46
A 50° C ($\nu = 30$ cSt)
THE ABOVE SPECIFICATIONS REFER TO OIL
TYPE ISO VG 46 AT 50° C ($\nu = 30$ cSt)

RENDIMENTO VOLUMETRICO
VOLUMETRIC EFFICIENCY



COPPIA ASSORBITA
DRIVE TORQUE



Verificare, nel caso vi sia l'utilizzo
contemporaneo delle due pompe, che la
coppia sull'albero in uscita non superi
i 270 Nm.

*In case of simultaneous use of both pumps,
make sure that the torque on output shaft
does not exceed 270 Nm.*