

TANDEM DIN 5462 SE

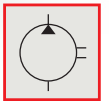
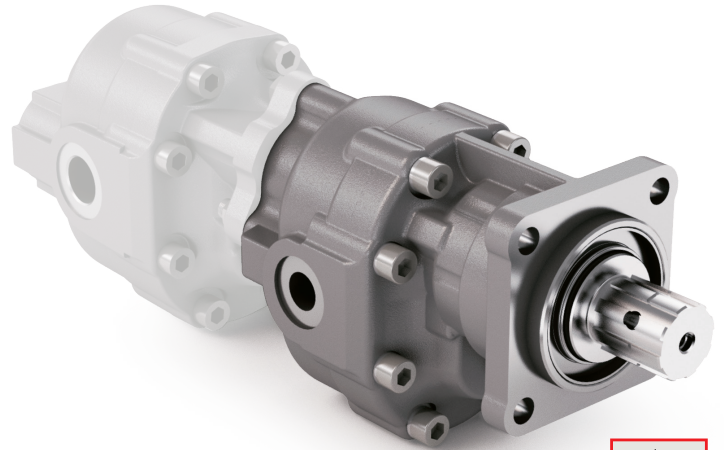
CODICE DI ORDINAZIONE / ORDERING CODE

200 FZO XXX X V

TIPO / TYPE
POMPA AD INGRANAGGI / GEAR PUMP

CILINDRATA / DISPLACEMENT

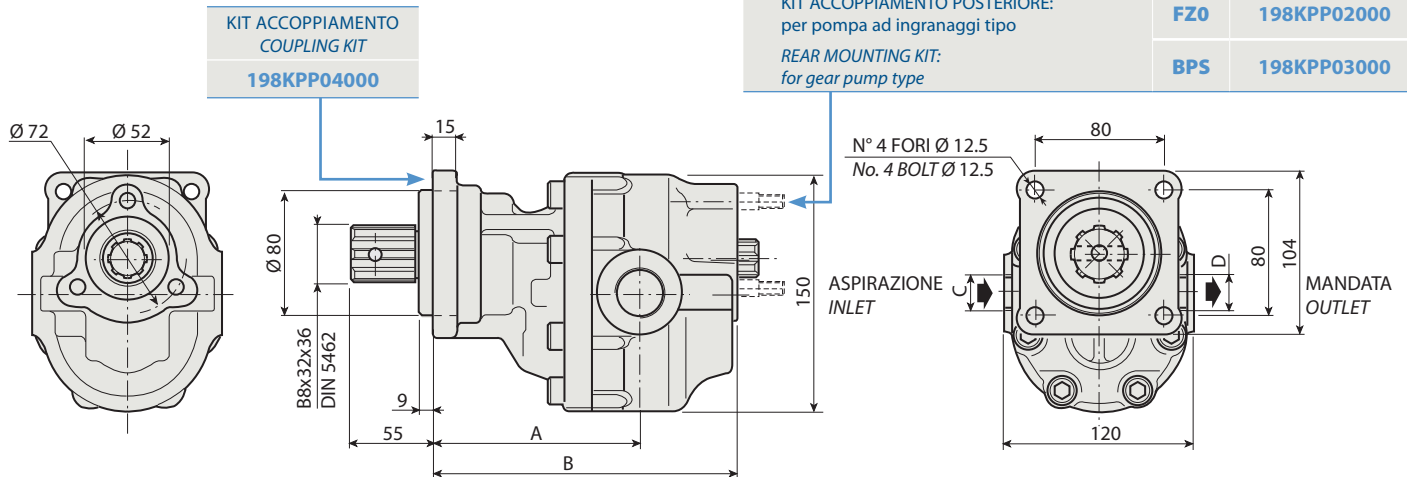
DIN 5462 SE
ROTAZIONE / ROTATION
D = DESTRO / CLOCKWISE
S = SINISTRO / ANTICLOCKWISE



1

FZO 22 V	FZO 36 V	FZO 57 V	FZO 90 V
FZO 27 V	FZO 43 V	FZO 65 V	FZO 110 V

KIT ACCOPPIAMENTO POSTERIORE: per pompa ad ingranaggi tipo	FZO	198KPP02000
REAR MOUNTING KIT: for gear pump type	BPS	198KPP03000



CARATTERISTICHE E DATI TECNICI / SPECIFICATIONS AND TECHNICAL DATA

TIPO TYPE	CODICE / CODE		CILINDRATA DISPLACEMENT cm ³ /rev.	A mm	B mm	C ASPIRAZIONE INLET	D MANDATA OUTLET	PESO WEIGHT kg
	ROTAZIONE DESTRA CLOCKWISE ROT.	ROTAZIONE SINISTRA ANTICLOCKWISE ROT.						
FZO 22 V	200FZ0022DV	200FZ0022SV	22	126	176.5	3/4" G	1/2" G	11.1
FZO 27 V	200FZ0027DV	200FZ0027SV	27	125	180	3/4" G	1/2" G	11.5
FZO 36 V	200FZ0036DV	200FZ0036SV	36	126	186.5	3/4" G	1/2" G	12.2
FZO 43 V	200FZ0043DV	200FZ0043SV	43	131	191.5	1" G	3/4" G	12.6
FZO 57 V	200FZ0057DV	200FZ0057SV	57	138	201.5	1" G	3/4" G	13.4
FZO 65 V	200FZ0065DV	200FZ0065SV	65	143	206.5	1" G	3/4" G	13.9
FZO 90 V	200FZ0090DV	200FZ0090SV	84	152.5	221.5	1" 1/4 G	1" G	14.9
FZO 110 V	200FZ0110DV	200FZ0110SV	105	164.5	233.5	1" 1/4 G	1" G	16.4

KIT RASAMENTI / THRUST PLATES KIT CODICE / CODE 20601800000

KIT GUARNIZIONI COMPLETO / COMPLETE SEALS KIT CODICE / CODE 21902200000

Per la scelta dei raccordi orientabili vedi pag. 212-213 / For the selection of adjustable fittings see page 212-213

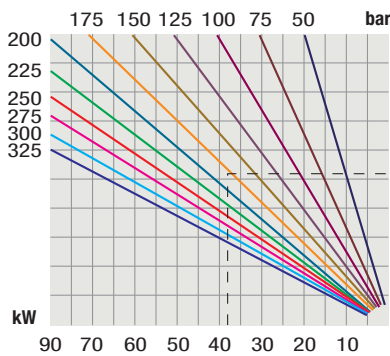
- A richiesta possono essere fornite le pompe ad ingranaggi con le guarnizioni HNBR per climi freddi (-40 °C).
- On request our gear pumps may be supplied with HNBR seals for cold climates (-40 °C).

TANDEM DIN 5462 SE

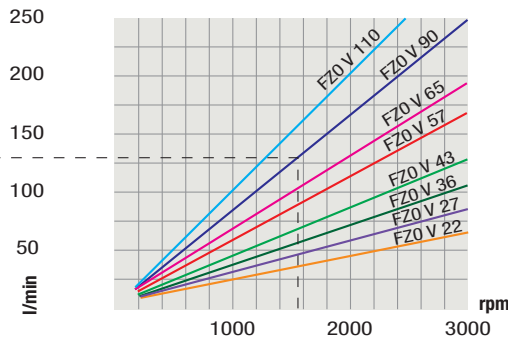
TIPO / TYPE		FZO 22 V FZO 27 V FZO 36 V FZO 43 V FZO 57 V FZO 65 V FZO 90 V FZO 110 V								
Cilindrata Displacement	Vg	cm ³ /n cm ³ /rev.	22	27	36	43	57	65	84	105
Pressione massima continua Max continuous operating pressure	P1	bar	305	300	300	280	240	220	210	180
Pressione massima intermittente (max 30 s) Max intermittent operating pressure	P2		330	325	325	305	265	240	230	200
Pressione massima di picco (≤ 0.1 s) Max peak pressure	P3		450	450	450	400	380	350	300	250
Velocità massima intermittente (P ≤ 20 bar) Max intermittent speed	n3	n/min r.p.m.	4000	3500	3500	3500	3500	3500	3500	3000
Velocità massima continua (≤ P1) Max continuous speed	n1		2500	2200	2200	2200	2000	1800	1500	1500
Velocità minima intermittente (≤ P2 x 0.5) (max 30 s) Min intermittent speed	n4		450	350	350	350	300	300	300	300

DIAGRAMMI / DIAGRAMS

POTENZA ASSORBITA
POWER INPUT



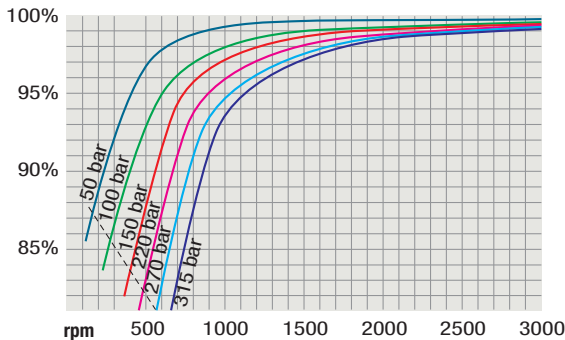
PORTATA
CAPACITY



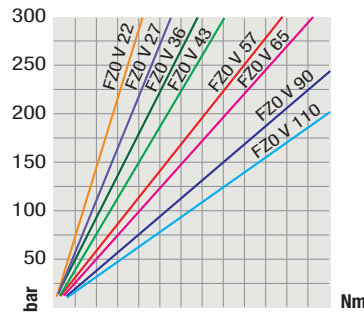
RILIEVI ESEGUITI CON OLIO ISO VG 46
A 50° C ($\nu = 30$ cSt)

THE ABOVE SPECIFICATIONS REFER TO OIL
TYPE ISO VG 46 AT 50° C ($\nu = 30$ cSt)

RENDIMENTO VOLUMETRICO
VOLUMETRIC EFFICIENCY



COPPIA ASSORBITA
DRIVE TORQUE



Verificare, nel caso vi sia l'utilizzo
contemporaneo delle due pompe, che la
coppia sull'albero in uscita non superi
i 270 Nm.

In case of simultaneous use of both pumps,
make sure that the torque on output shaft
does not exceed 270 Nm.